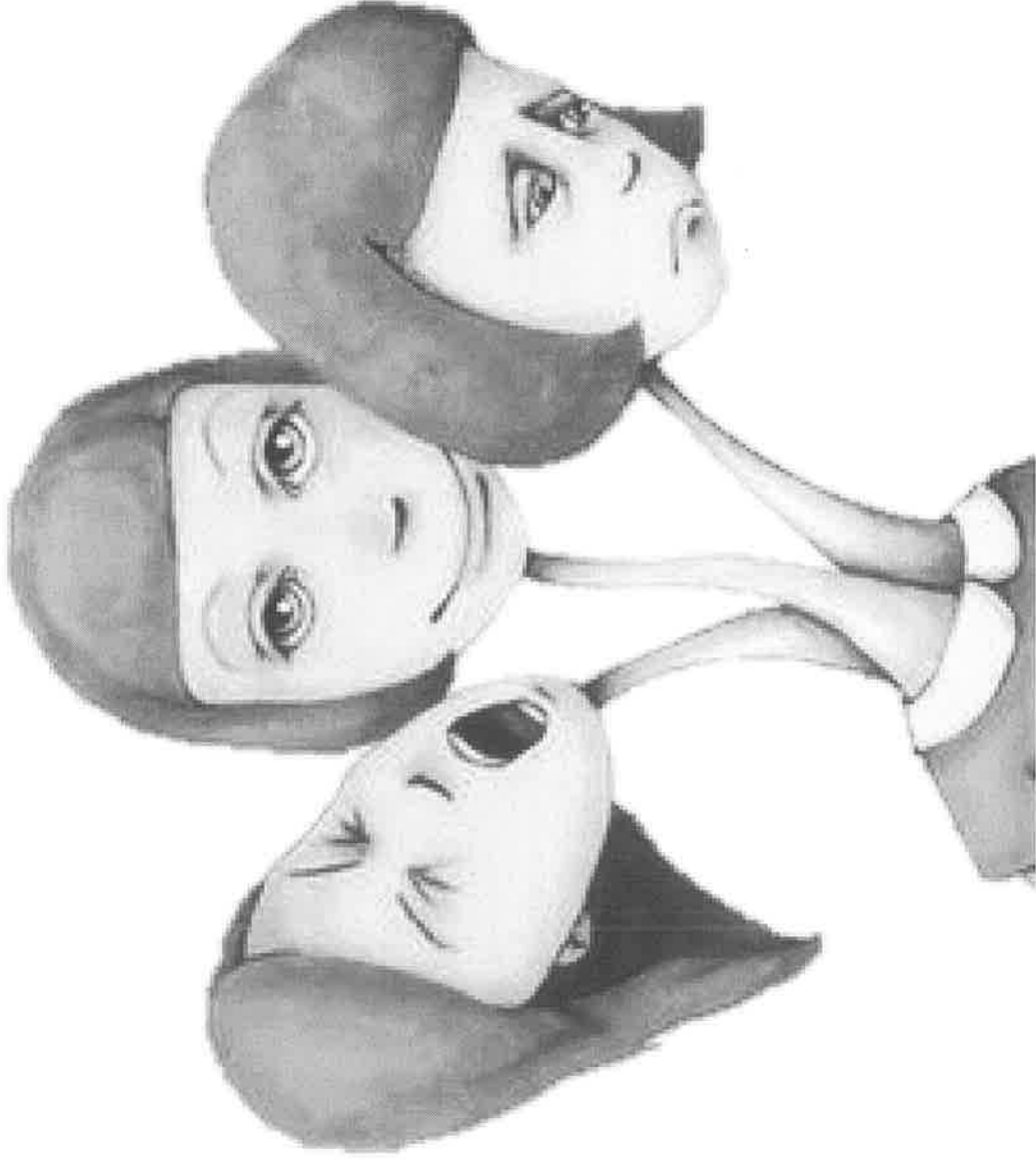


DISSOCIATIVE DISORDERS

Disorders in which the sense of self has become separated (dissociated) from previous memories, thoughts, or feelings



DISSOCIATIVE DISORDERS

DISSOCIATIVE AMNESIA

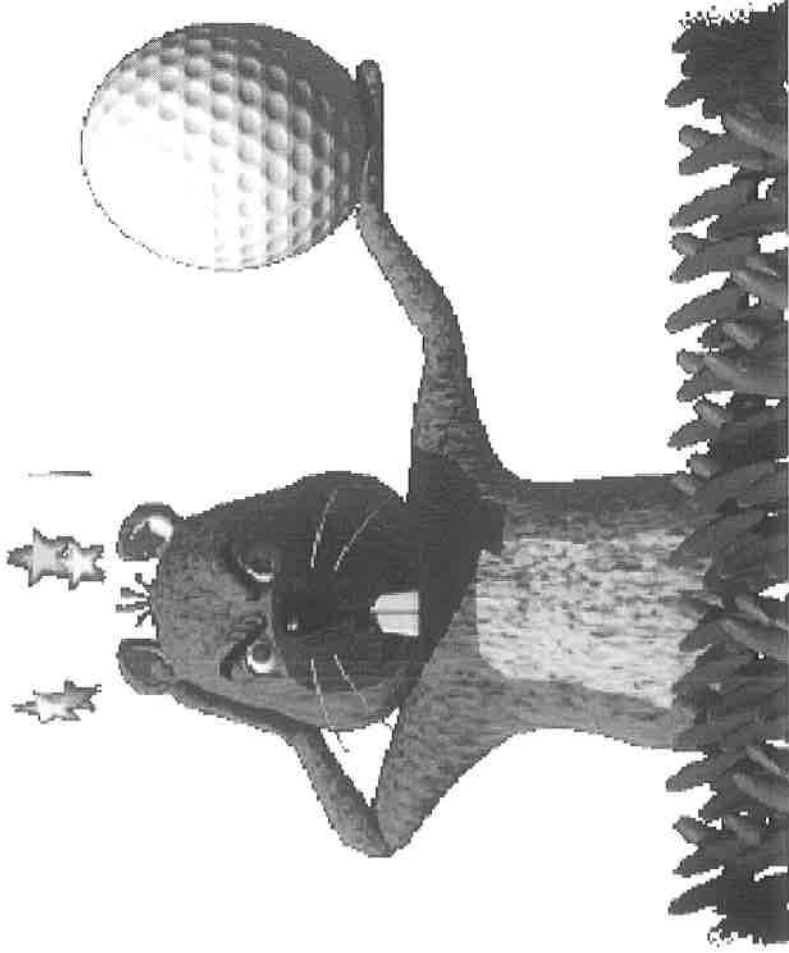
A partial or total
forgetting of past
experiences
without organic
cause

Usually in reaction
to a traumatic
event



DISSOCIATIVE DISORDERS

ORGANIC AMNESIA



Not a dissociative disorder

Results from other medical trauma – (i.e. a stroke, a blow to the head, alcoholism)

DISSOCIATIVE DISORDERS

DISSOCIATIVE FUGUE

Characterized by physical relocation and the assumption of a new identity with amnesia of the previous identity

Can last hours, weeks, months or years



DISSOCIATIVE DISORDERS

DISSOCIATIVE IDENTITY DISORDER

Used to be known as Multiple Personality Disorder

Often confused with schizophrenia

People with D.I.D. commonly have a history of childhood abuse or trauma

Unlike schizophrenia, they have two or more distinct identities, are not psychotic and have severe memory lapses



DISSOCIATIVE DISORDERS

ILLNESS ANXIETY DISORDER

Characterized by
imagined symptoms
of illness

A belief that minor
issues (headache,
upset stomach) are
indicative of more
severe illnesses



DISSOCIATIVE DISORDERS

SOMATIFORM DISORDERS

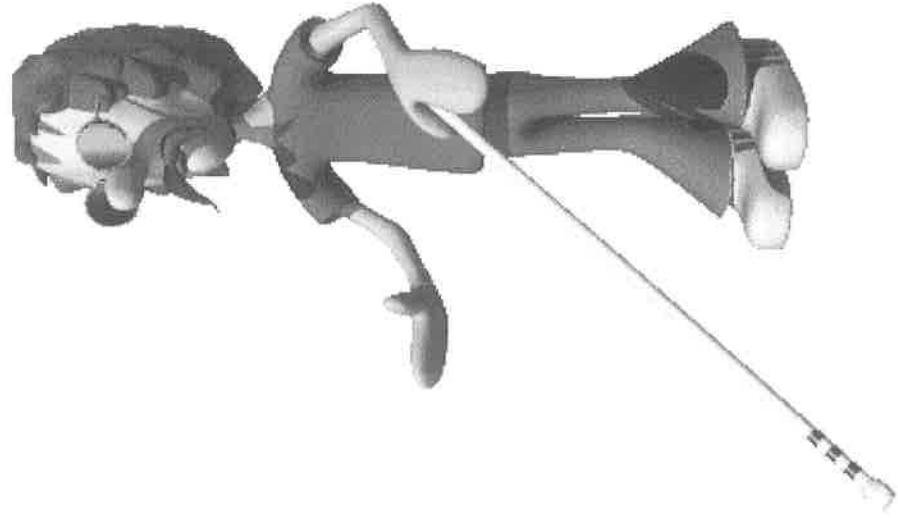
Disorders in which symptoms take a bodily form without any physical cause

Two types:

- Conversion disorders
- Personality disorders



DISSOCIATIVE DISORDERS

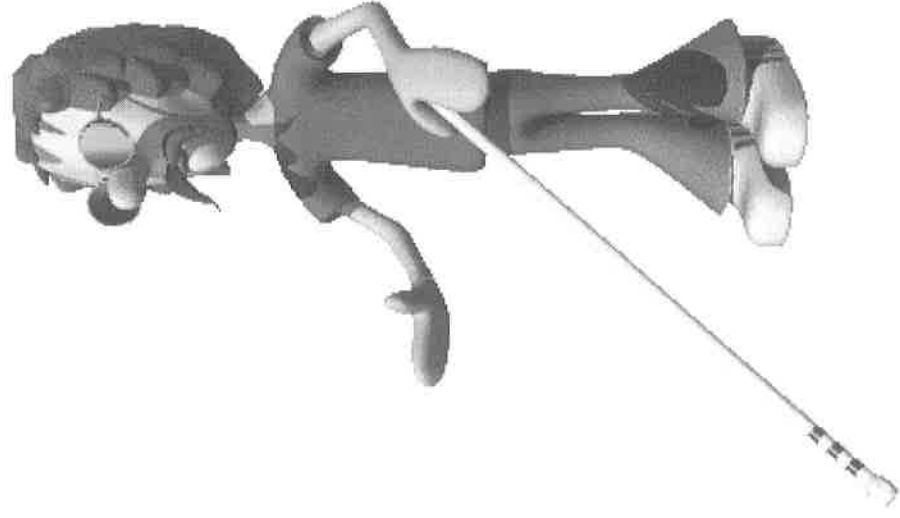


CONVERSION DISORDERS

Loss or impairment of some motor or sensory function due a psychological conflict or stress

Formerly known as hysteria

DISSOCIATIVE DISORDERS



CONVERSION DISORDERS

Loss or impairment of some motor or sensory function due a psychological conflict or stress

Formerly known as hysteria

DISSOCIATIVE DISORDERS

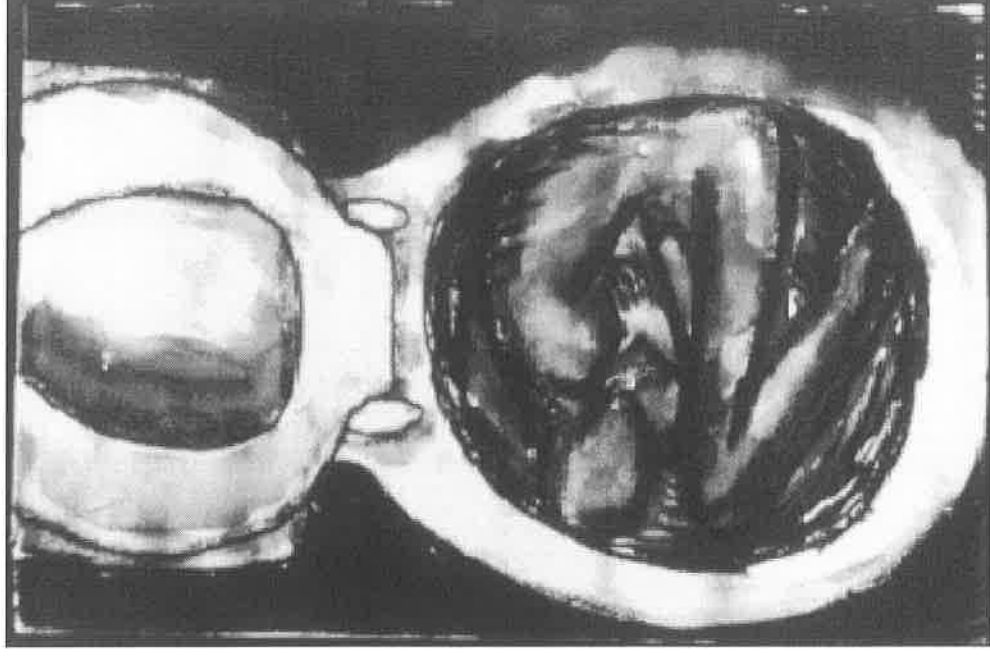
EATING DISORDERS

BULIMIA NERVOSA

Characterized by binging (eating large amounts of food) and purging (getting rid of the food)

ANOREXIA NERVOSA

Starving one's self to below 85% of their normal body weight. Vast majority are women



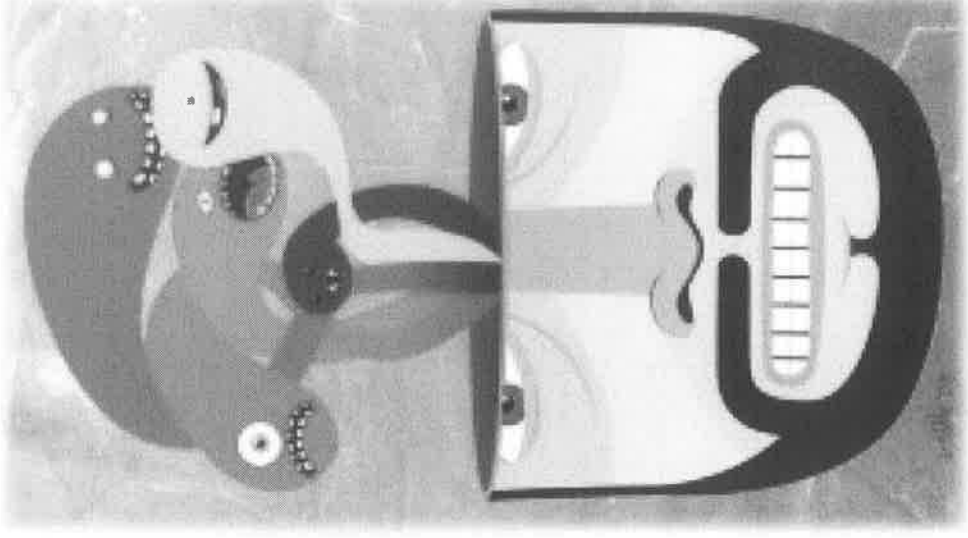
DISSOCIATIVE DISORDERS

PERSONALITY DISORDERS

Characterized by rapid and lasting behavior patterns that disrupt social functioning

Three main clusters:

- Anxiety
- Odd/eccentric behaviors
- Dramatic/impulsive behaviors



DISSOCIATIVE DISORDERS

PERSONALITY DISORDERS: ANXIETY

AVOIDANT PERSONALITY DISORDER

Sensitive about being rejected so relationships become difficult

DEPENDENT PERSONALITY DISORDER

Characterized by being clingy and submissive



DISSOCIATIVE DISORDERS

PERSONALITY DISORDERS: ANXIETY

OBSESSIVE-COMPULSIVE DISORDER

Overly concerned with certain thoughts and performing certain behaviors

Not as extreme as OCD anxiety disorder



DISSOCIATIVE DISORDERS

PERSONALITY DISORDERS: ODD/ECCENTRIC

PARANOID PERSONALITY DISORDER

A deep distrust of other people

SCHIZOID PERSONALITY DISORDER

**Detachment from social
relationships (true hermits)**



DISSOCIATIVE DISORDERS

PERSONALITY DISORDERS: ODD/ECCENTRIC

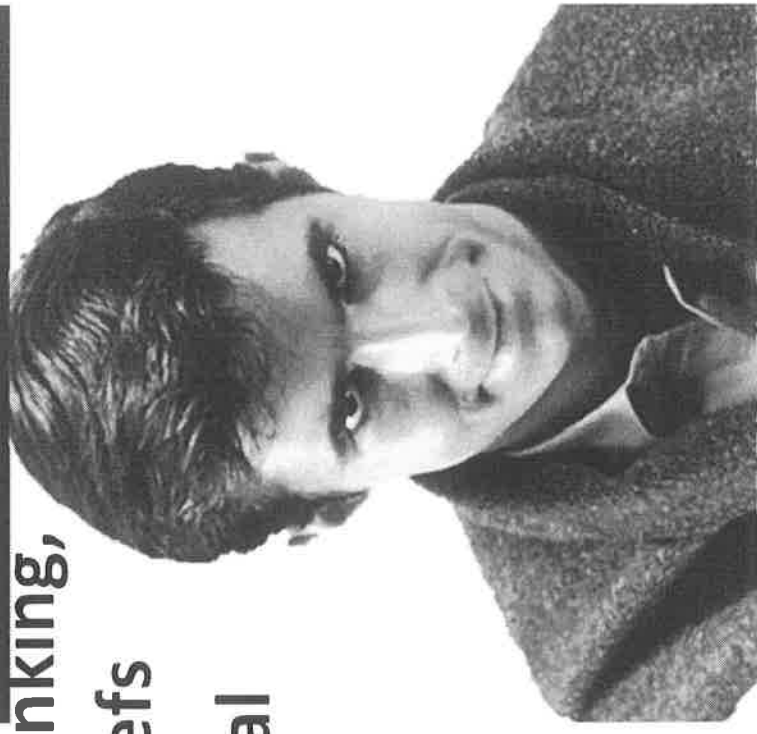
SCHIZOTYPAL PERSONALITY DISORDER

Characterized by a need for social isolation, odd behavior and thinking,

and often unconventional beliefs

Some believe they have magical powers (ESP)

Some believe it is a form of schizophrenia



DISSOCIATIVE DISORDERS

PERSONALITY DISORDERS: DRAMATIC/IMPULSIVE

BORDERLINE PERSONALITY DISORDER

Characterized by unstable emotions and relationships

Prone to constant mood swings and bouts of anger (sometimes causing themselves injury)

Suicide threats



DISSOCIATIVE DISORDERS

PERSONALITY DISORDERS: DRAMATIC/IMPULSIVE

ANTISOCIAL PERSONALITY DISORDER

Characterized by a lack of conscience

Prone to criminal behavior
No remorse when they hurt others

Concerned with their own needs



DISSOCIATIVE DISORDERS

PERSONALITY DISORDERS: DRAMATIC/IMPULSIVE

HISTRIONIC PERSONALITY DISORDER

Characterized by a pattern of excessive emotionality and attention seeking

May act silly or dress provocatively

Individuals are lively, dramatic, enthusiastic and flirtatious



DISSOCIATIVE DISORDERS

PERSONALITY DISORDERS: DRAMATIC/IMPULSIVE

NARCISSISTIC

PERSONALITY DISORDER

Characterized by an
inflated sense of self-
importance

Thinking that you are the
center of the universe

React to criticism with rage
or shame

